

## ENTRANCE REQUIREMENT PROJECT | INTERIOR DESIGN

Imagine you are an Interior Designer who has been hired to design a residential space.

### Interior Design Exercise

#### PART ONE

On the first sheet of paper, redraw a floor plan for a living room/den. Draw the plan at 1/4-inch scale, that is, 1/4 inch = 1 foot. After you have finished drawing the floor plan, add furniture to the plan. You may arrange the furniture any way you like, but you **MUST** use:

- > One sofa
- > Two chairs
- > One coffee table
- > One or two bookcases
- > One or two end tables
- > One television set

SEE SAMPLE FLOOR PLAN AND FURNITURE ON BELOW.

#### PART TWO

Choose A or B below.

A. On the second sheet of paper, sketch an area of the room (as you have drawn it in the floor plan with furniture) in perspective.

B. On the second sheet of paper, prepare a color scheme of small samples of fabric and paint. Arrange and paste up the samples on the paper and include a title and your full name.

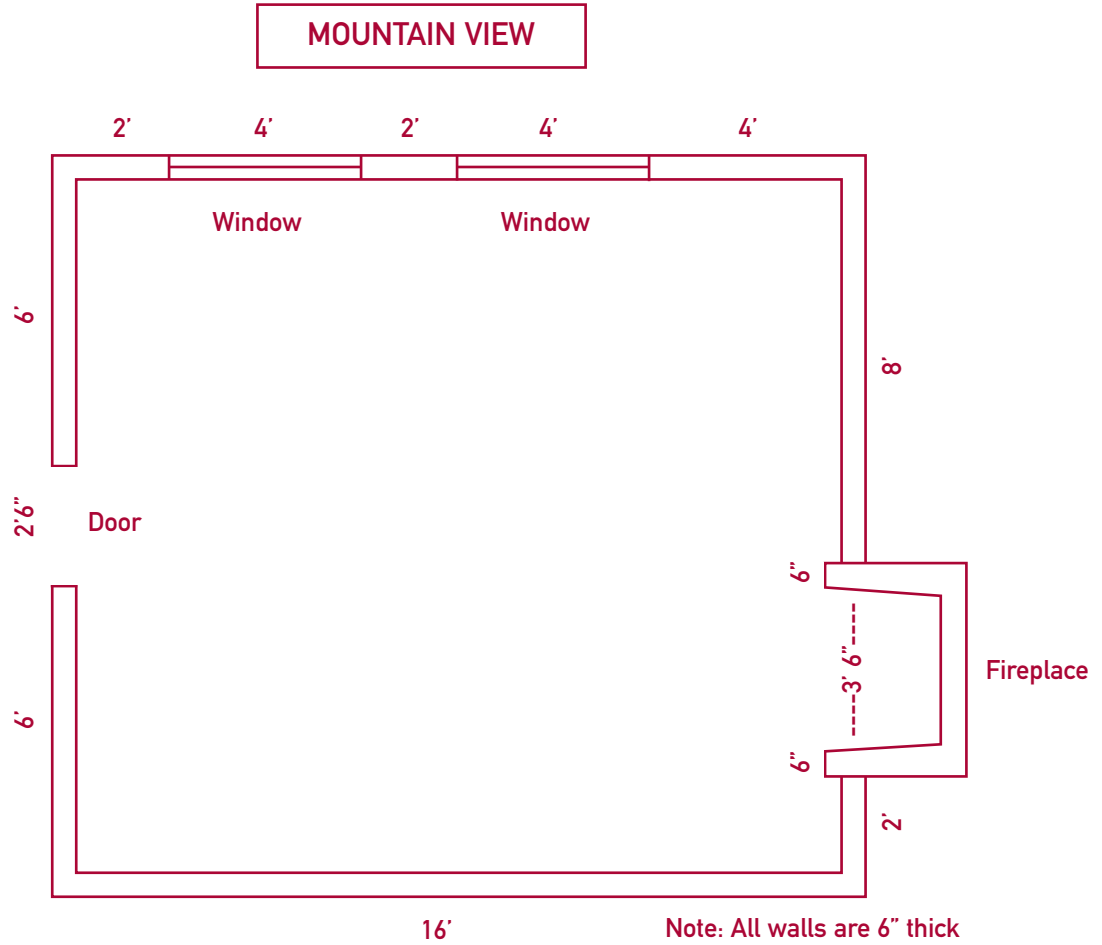
#### IMPORTANT NOTES

This exercise can be done using a 12-inch ruler, a pencil, eraser, and two pieces of plain white (unruled) paper, 8.5 x 11 inches.

Your work will be reviewed for creativity and quality of presentation. Remember: A neat presentation is always advantageous. All work submitted to FIDM becomes the property of the college and will not be returned.

# Sample Floor Plan

Redraw this floor plan to scale on your own sheet of paper.  
Your sketch should be 1/4 inch scale; 1/4 inch = 1 foot.



Furniture	Length x Width
<b>Sofa (pick one size)</b>	
Large	84" x 30"
Medium	72" x 30"
Small	60" x 30"
<b>Chair (use two)</b>	30" x 30"
<b>Coffee Table (use one)</b>	48" x 24"
<b>Bookcase (use one or two)</b>	60" x 12"
<b>End Table (use one or two)</b>	24" x 24"
<b>Television</b>	36" x 24"

